



# Pique Knit Sport Shirt K420



A favorite year after year, these sport shirts are known for their exceptional range of colors, styles and sizes. The soft pique knit is shrink resistant and easy to care for, so your group will always look its best.

- 7-ounce, 100% ring spun combed cotton heavyweight pique (preshrunk)
- Garment washed for softness
- Double-needle stitching throughout
- Flat knit collar and cuffs
- Horn-tone buttons
- Locker patch
- Side vents

**CARE INSTRUCTIONS**

Machine wash cold with like colors. Do not bleach. Tumble dry low. Warm iron if necessary.

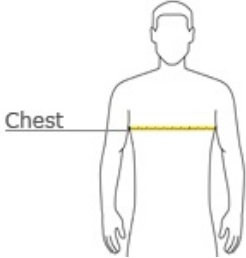


front



back

**HOW TO MEASURE**



**CHEST**  
With arms down at sides, measure around the upper body, under arms and over the fullest part of the chest.

**SIZE CHART**

	XS	S	M	L	XL	2XL	3XL	4XL	5XL	6XL
Chest	32-34	35-37	38-40	41-43	44-46	47-49	50-53	54-57	58-60	61-63

**COLOR INFORMATION**



Athletic Gold  
PMS 137C



Bark  
PMS 411C



Black  
PMS Process Black



Blueberry  
PMS No Match



Burgundy  
PMS 505C



Classic Navy  
PMS 532C



Dark Green  
PMS 5535C



Faded Blue  
PMS 7455C



Faded Olive  
PMS 417C



Forest  
PMS 560C



Ivory  
PMS No Match



Khaki Heather  
PMS No Match



Light Blue  
PMS 284C



Light Pink



Navy  
PMS 533C



Orange  
PMS 1655C



Oxford  
PMS No Match



Pistachio  
PMS 578C



Purple  
PMS 2627C



Red  
PMS 187C



Royal  
PMS 294C



Seafoam  
PMS 7475C



Steel Grey  
PMS 432C



Stone  
PMS 7502C



Sunset Red  
PMS 1807C



Turquoise  
PMS 3115C



White  
PMS No Match



Yellow  
PMS 1215C

# Stain-Resistant Sport Shirt K510



We've taken our classic sport shirt silhouette and added superior wrinkle and shrink resistance. Odor fighting properties help minimize odor. We completed the shirt with a soil-release finish for long-lasting, professional wear.

- 5.6-ounce, 60/40 cotton/poly pique
- Wrinkle resistant
- Shrink resistant
- Odor fighting
- Soil-release finish
- Double-needle stitching throughout
- Flat knit collar
- 3-button placket with dyed-to-match buttons
- Open hem sleeves
- Side vents



front

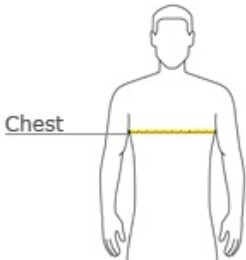


back

### CARE INSTRUCTIONS

Machine wash with like colors. Do not bleach. Tumble dry low. Warm iron if necessary.

### HOW TO MEASURE



#### CHEST

With arms down at sides, measure around the upper body, under arms and over the fullest part of the chest.

### SIZE CHART

	XS	S	M	L	XL	2XL	3XL	4XL	5XL	6XL
Chest	32-34	35-37	38-40	41-43	44-46	47-49	50-53	54-57	58-60	61-63

### COLOR INFORMATION



Banana  
PMS 505C



Black  
PMS Process Black



Burgundy  
PMS 505C



Dark Green  
PMS 5355C



Light Blue  
PMS 278C



Navy  
PMS 532C



Red  
PMS 187C



Royal  
PMS 661C



Steel Grey  
PMS 431C



Stone  
PMS 466C



White  
PMS No Match



# Long Sleeve Denim Shirt S600



Showcase your logo on America's favorite fabric. You'll find versatility and reliability in our stonewashed denim shirt.

- 6.5-ounce, 100% cotton
- Double-needle stitching throughout
- Button-down collar
- Patch pocket
- Back pleat
- Button-through sleeve plackets
- Adjustable cuffs
- Due to special finishing process, colors may vary.

**CARE INSTRUCTIONS**

Machine wash cold with like colors. Do not bleach. Do not dry clean. Tumble dry low. Warm iron if necessary.

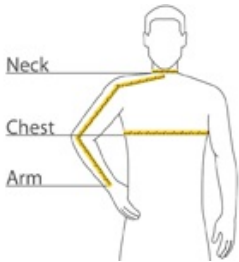


front



back

**HOW TO MEASURE**



**CHEST**

With arms down at sides, measure around the upper body, under arms and over the fullest part of the chest.

**ARM**

Place hand on hip. Start at the center of the back of the neck and measure across the shoulder, to the elbow, and then down to the wrist.

**NECK**

Measure around the base of the neck, inserting a finger or two between the tape and neck for comfort.

**SIZE CHART**

	XS	S	M	L	XL	2XL	3XL	4XL	5XL	6XL
Chest	32-34	35-37	38-40	41-43	44-46	47-49	50-53	54-57	58-60	61-63
Neck	14 1/2 - 15	15 - 15 1/2	15 1/2 - 16	16 - 16 1/2	16 1/2 - 17	17 - 17 1/2	17 1/2 - 18	18 - 18 1/2	18 1/2 - 19	19 - 19 1/2
Arm	30 1/2	32	34	35	36 1/2	37 1/2	38 1/2	39 1/2	40 1/2	41 1/2

**COLOR INFORMATION**



Faded Denim\*

# Long Sleeve Cotton Twill Shirt S634



Ultra-versatile and brushed for softness, our go-to twill shirt is crafted from durable 100% cotton. Perfect alone or layered, this shirt is not only comfortable it's also a great value.

- 4.7-ounce, 100% cotton twill
- Button-down collar
- Dyed-to-match buttons
- Patch pocket
- Box back pleat
- Button-through sleeve plackets
- Adjustable cuffs

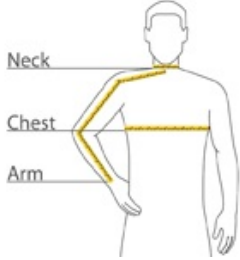


front



back

## HOW TO MEASURE



### CHEST

With arms down at sides, measure around the upper body, under arms and over the fullest part of the chest.

### ARM

Place hand on hip. Start at the center of the back of the neck and measure across the shoulder, to the elbow, and then down to the wrist.

### NECK

Measure around the base of the neck, inserting a finger or two between the tape and neck for comfort.

## SIZE CHART

	XS	S	M	L	XL	2XL	3XL	4XL
Chest	32-34	35-37	38-40	41-43	44-46	47-49	50-53	54-57
Neck	14 1/2 - 15	15 - 15 1/2	15 1/2 - 16	16 - 16 1/2	16 1/2 - 17	17 - 17 1/2	17 1/2 - 18	18 - 18 1/2
Arm	30 1/2	32	34	35	36 1/2	37 1/2	38 1/2	39 1/2

## COLOR INFORMATION



Black  
PMS 426 C



Burgundy  
PMS 7428 C



Faded Blue  
PMS 7684 C



Khaki  
PMS 403 C



Navy  
PMS 533 C



Stone  
PMS 453 C



White  
PMS 7541 C

## Long Sleeve Value Poplin Shirt S632



A smart choice for the workplace—and your budget. Our new poplin shirt can take daily wear and tear and remain looking great, thanks to an easy care blend. Lightweight and soft, it's also durable and perfect for any occupation requiring a neat, professional look.

- 2.95-ounce, 65/35 poly/cotton
- Button-down collar
- Dyed-to-match buttons
- Box back pleat
- Patch pocket
- Button-through sleeve plackets
- Adjustable cuffs

### CARE INSTRUCTIONS

**Coming Soon** Port Authority® - Long Sleeve Value Poplin Shirt. S632

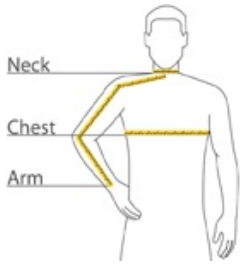


front



back

### HOW TO MEASURE



#### CHEST

With arms down at sides, measure around the upper body, under arms and over the fullest part of the chest.

#### ARM

Place hand on hip. Start at the center of the back of the neck and measure across the shoulder, to the elbow, and then down to the wrist.

#### NECK

Measure around the base of the neck, inserting a finger or two between the tape and neck for comfort.

### SIZE CHART

	XS	S	M	L	XL	2XL	3XL	4XL
Chest	32-34	35-37	38-40	41-43	44-46	47-49	50-53	54-57
Neck	14 1/2 - 15	15 - 15 1/2	15 1/2 - 16	16 - 16 1/2	16 1/2 - 17	17 - 17 1/2	17 1/2 - 18	18 - 18 1/2
Arm	30 1/2	32	34	35	36 1/2	37 1/2	38 1/2	39 1/2

### COLOR INFORMATION



Black



Grey



Light Blue



Mediterranean Blue



Navy



Stone



White



# Essential T-Shirt PC61



A year-round essential, our best-selling t-shirt has been voted "most popular" by groups, teams, clubs and schools across America.

- Heavyweight 6.1-ounce, 100% cotton (preshrunk)
- Shoulder-to-shoulder taping
- Coverseamed neck
- Double-needle hem
- Ash is 99/1 cotton/poly.
- Athletic Heather is 90/10 cotton/poly.
- Dark Heather Grey is 60/40 cotton/poly.

### CARE INSTRUCTIONS

Machine wash cold, inside out, with like colors. Only non-chlorine when needed. Tumble dry medium. Medium-hot iron. Do not iron decoration.

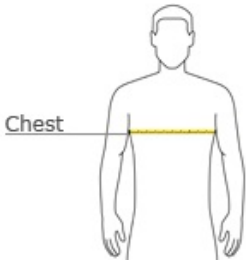


front



back

### HOW TO MEASURE



#### CHEST

With arms down at sides, measure around the upper body, under arms and over the fullest part of the chest.

### SIZE CHART

	S	M	L	XL	2XL	3XL	4XL	5XL	6XL
Chest	34-36	38-40	42-44	46-48	50-52	54-56	58-60	62-64	66-69

### COLOR INFORMATION



Aquatic Blue  
PMS 298 C



Ash  
PMS No Match



Athletic Heather  
PMS No Match



Athletic Maroon  
PMS 229 C



Black  
PMS Process Black



Brown  
PMS 7519 C



Candy Pink  
PMS 189 C



Cardinal  
PMS 208 C



Carolina Blue  
PMS 659 C



Chamois Yellow  
PMS 131 C



Charcoal  
PMS CGy 11 C



Colonial Blue  
PMS 646 C



Daffodil Yellow  
PMS 134 C



Dark Chocolate  
Brown  
PMS 440 C



Dark Green  
PMS 5535 C



Dark Heather Grey  
PMS 425 C



Deep Marine  
PMS 654 C



Dill Green  
PMS No Match



Dusty Brown  
PMS No Match



Fiery Red  
PMS 1795 C



Forest Green  
PMS 627 C



Gold  
PMS 137 C



Jade Green  
PMS 569 C



Kelly  
PMS 340 C



Lemon Yellow  
PMS 123 C



Light Blue  
PMS 543 C



Light Sand  
PMS 7534 C



Lime  
PMS 367 C



Medium Grey  
PMS 7539 C



Natural  
PMS 4685 C



Navy  
PMS 296 C



Olive  
PMS No Match



Orange  
PMS 172 C



Orange Sherbet  
PMS 1575 C



Pale Pink  
PMS 670 C



Pistachio  
PMS 7494 C



Purple  
PMS 273 C



Red  
PMS 200 C



Rich Red  
PMS 201 C



Royal  
PMS 661 C



Sand  
PMS No Match



Sangria  
PMS 227 C



Spruce  
PMS No Match



Steel Blue  
PMS 7546 C



Stonewashed Blue  
PMS 5414 C



Stonewashed Green  
PMS 414 C



Texas Orange  
PMS 1675 C



Turquoise  
PMS 7461 C



Ultramarine Blue  
PMS 7452 C



Violet  
PMS 7456 C



White  
PMS No Match



Yellow  
PMS 127 C

# Ladies Pique Knit Sport Shirt L420



A favorite year after year, these sport shirts are known for their exceptional range of colors, styles and sizes. The soft pique knit is shrink resistant and easy to care for, so your group will always look its best.

- 7-ounce, 100% ring spun combed cotton heavyweight pique (preshrunk)
- Garment washed for softness
- Double-needle stitching throughout
- Traditional, relaxed look
- Flat knit collar and cuffs
- Reverse placket
- Horn-tone buttons
- Locker patch
- Side vents

**CARE INSTRUCTIONS**

Machine wash cold with like colors. Do not bleach. Tumble dry low. Warm iron if necessary.

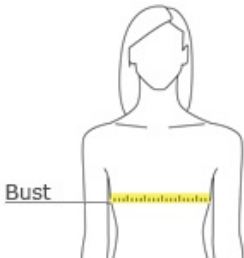


front



back

**HOW TO MEASURE**



**BUST**  
With arms down at sides, measure around the upper body, under arms and around the fullest part of the bust.

**SIZE CHART**

	XS	S	M	L	XL	XXL	3XL	4XL
Size	2	4/6	8/10	12/14	16/18	20/22	24/26	28/30
Bust	32-34	35-36	37-38	39-41	42-44	45-47	48-51	52-55

**COLOR INFORMATION**



Black  
PMS Process Black



Blueberry  
PMS No Match



Burgundy  
PMS 505C



Classic Navy  
PMS 532C



Dark Green



Faded Blue  
PMS 7455C



Khaki Heather



Light Blue  
PMS 284C



Light Pink



Lilac  
PMS 5285C



Navy  
PMS 533C



Orange  
PMS 1655C



Oxford



Pistachio  
PMS 578C



Purple  
PMS 2627C



Red  
PMS 187C



Royal



Seafoam  
PMS 7475C



Steel Grey



Stone  
PMS 7502C



Sunset Red  
PMS 1807C



Turquoise  
PMS 3115C



White  
PMS No Match



Yellow  
PMS 1215C

# Ladies Stain-Resistant Sport Shirt L510



We've taken our classic sport shirt silhouette and added superior wrinkle and shrink resistance. Odor fighting properties help minimize odor. We completed the shirt with a soil-release finish for long-lasting, professional wear.

- 5.6-ounce, 60/40 cotton/poly pique
- Wrinkle resistant
- Shrink resistant
- Odor fighting
- Soil-release finish
- Traditional, relaxed look
- Double-needle stitching throughout
- Flat knit collar
- 3-button placket with dyed-to-match buttons
- Open hem sleeves
- Side vents



front

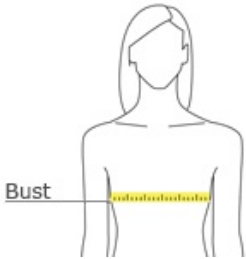


back

### CARE INSTRUCTIONS

Machine wash cold with like colors. Do not bleach.  
Tumble dry low. Warm iron if necessary.

### HOW TO MEASURE



**BUST**  
With arms down at sides, measure around the upper body, under arms and around the fullest part of the bust.

### SIZE CHART

	XS	S	M	L	XL	XXL	3XL	4XL
Size	2	4/6	8/10	12/14	16/18	20/22	24/26	28/30
Bust	32-34	35-36	37-38	39-41	42-44	45-47	48-51	52-55

### COLOR INFORMATION



Banana  
PMS 1345C



Black  
PMS Process Black



Burgundy  
PMS 505C



Dark Green  
PMS 5535C



Light Blue  
PMS 278C



Light Pink



Navy  
PMS 532C



Red  
PMS 187C



Royal  
PMS 661C



Stone  
PMS 466C



White  
PMS No Match



# Ladies Long Sleeve Value Denim Shirt LSP10



With sturdy construction, a generous cut and soft garment washing, our Value Denim shirt won't stretch your budget.

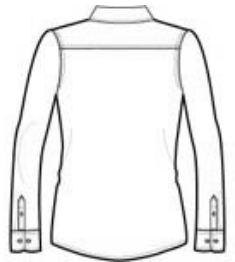
- 6.5-ounce, 100% cotton
- Double-needle stitching throughout
- Traditional, relaxed look
- Open collar
- Horn-tone buttons
- Button-through sleeve plackets
- Adjustable cuffs
- Tuck-in tail
- Due to special finishing process, colors may vary.

### CARE INSTRUCTIONS

Machine wash cold with like colors. Do not bleach.  
Tumble dry low. Warm iron if necessary.

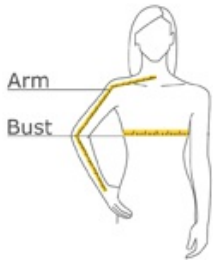


front



back

### HOW TO MEASURE



#### BUST

With arms down at sides, measure around the upper body, under arms and around the fullest part of the bust.

#### ARM

Place hand on hip. Start at the center of the back of the neck and measure across the shoulder, to the elbow, and then down to the wrist.

### SIZE CHART

	XS	S	M	L	XL	XXL	3XL	4XL
Size	2	4/6	8/10	12/14	16/18	20/22	24/26	28/30
Bust	32-34	35-36	37-38	39-41	42-44	45-47	48-51	52-55
Arm	30 - 30 3/4	30 3/4 - 31 1/2	31 1/2 - 32	32 - 32 1/2	32 1/2 - 33	33 - 33 3/8	33 3/8 - 33 3/4	33 3/4 - 34 1/2

### COLOR INFORMATION



Faded Blue\*



Ink Blue\*

# Ladies Long Sleeve Cotton Twill Shirt L634

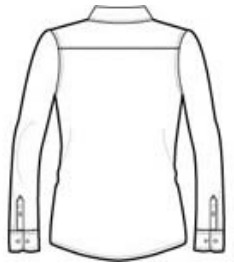


Ultra-versatile and brushed for softness, our new go-to twill shirt is crafted from durable 100% cotton. Perfect alone or layered, this shirt is not only comfortable—it's also a great value.

- 4.7-ounce, 100% cotton twill
- Gently contoured silhouette
- Open collar
- Dyed-to-match buttons
- Button-through sleeve plackets
- Adjustable cuffs

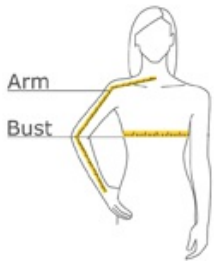


front



back

## HOW TO MEASURE



### BUST

With arms down at sides, measure around the upper body, under arms and around the fullest part of the bust.

### ARM

Place hand on hip. Start at the center of the back of the neck and measure across the shoulder, to the elbow, and then down to the wrist.

## SIZE CHART

	XS	S	M	L	XL	XXL	3XL	4XL
Size	2	4/6	8/10	12/14	16/18	20/22	24/26	28/30
Bust	32-34	35-36	37-38	39-41	42-44	45-47	48-51	52-55
Arm	30 - 30 3/4	30 3/4 - 31 1/2	31 1/2 - 32	32 - 32 1/2	32 1/2 - 33	33 - 33 3/8	33 3/8 - 33 3/4	33 3/4 - 34 1/2

## COLOR INFORMATION



Black



Burgundy



Faded Blue



Khaki



Navy



Stone



White



# Ladies Long Sleeve Value Poplin Shirt L632



A smart choice for the workplace—and your budget. Our new poplin shirt can take daily wear and tear and remain looking great, thanks to an easy care blend. Lightweight and soft, it's also durable and perfect for any occupation requiring a neat, professional look.

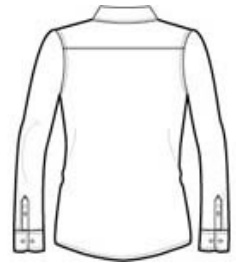
- 2.95-ounce, 65/35 poly/cotton
- Gently contoured silhouette
- Open collar
- Dyed-to-match buttons
- Button-through sleeve plackets
- Adjustable cuffs

**CARE INSTRUCTIONS**

**Coming Soon** Port Authority® - Ladies Long Sleeve Value Poplin Shirt. L632

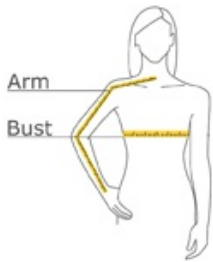


front



back

**HOW TO MEASURE**



**BUST**  
With arms down at sides, measure around the upper body, under arms and around the fullest part of the bust.

**ARM**  
Place hand on hip. Start at the center of the back of the neck and measure across the shoulder, to the elbow, and then down to the wrist.

**SIZE CHART**

	XS	S	M	L	XL	XXL	3XL	4XL
Size	2	4/6	8/10	12/14	16/18	20/22	24/26	28/30
Bust	32-34	35-36	37-38	39-41	42-44	45-47	48-51	52-55
Arm	30 - 30 3/4	30 3/4 - 31 1/2	31 1/2 - 32	32 - 32 1/2	32 1/2 - 33	33 - 33 3/8	33 3/8 - 33 3/4	33 3/4 - 34 1/2

**COLOR INFORMATION**



Black    Grey    Light Blue    Mediterranean Blue    Navy    Stone    White

# Ladies Essential T-Shirt LPC61



A year-round essential, our best-selling t-shirt has been voted "most popular" by groups, teams, clubs and schools across America.

- Heavyweight 6.1-ounce, 100% cotton
- Shorter cut through the body and sleeves for a more feminine fit
- Shoulder-to-shoulder taping
- Coverseamed neck
- Double-needle hem
- Athletic Heather is 90/10 cotton/poly.

### CARE INSTRUCTIONS

Machine wash with like colors. Do not bleach. Tumble dry low. Cool iron if needed.

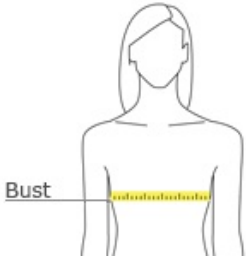


front



back

### HOW TO MEASURE



**BUST**  
With arms down at sides, measure around the upper body, under arms and around the fullest part of the bust.

### SIZE CHART

	XS	S	M	L	XL	XXL	3XL	4XL
Size	2	4/6	8/10	12/14	16/18	20/22	24/26	28/30
Bust	32-34	35-36	37-38	39-41	42-44	45-47	48-51	52-55

### COLOR INFORMATION



Aquatic Blue  
PMS 7459 C



Ash



Athletic Heather  
PMS 435 C



Athletic Maroon



Black  
PMS Process Black  
C



Candy Pink  
PMS 1905 C



Cardinal



Charcoal



Daffodil Yellow  
PMS 1215 C



Dark Chocolate  
Brown  
PMS 439 C



Dark Green



Gold



Kelly



Lemon Yellow  
PMS 123 C



Light Blue  
PMS 543 C



Lime  
PMS 367 C



Natural



Navy  
PMS 296 C



Orange  
PMS 172 C



Orange Sherbet



Pale Pink  
PMS 670 C



Purple



Red  
PMS 200 C



Royal  
PMS 661 C



Sand



Sangria  
PMS 7425 C



Stonewashed Blue



Stonewashed  
Green



Turquoise



Ultramarine Blue  
PMS 646 C



White  
PMS 663 C



Yellow